



# AtSource

**DRIVING  
TRANSFORMATION  
IN AGRICULTURAL  
SUPPLY CHAINS**

Re-imagined by  **Olam**

# EVERYTHING YOU NEED TO KNOW

**AtSource** is a comprehensive sustainable sourcing solution for agricultural raw materials and food ingredients.

From field to factory gate, **AtSource** helps customers shape real change on the ground and meet multiple social and environmental targets, thereby increasing resilience in supply chains.

By connecting customers directly to the source of supply and at each stage of the product's journey, traceability is guaranteed.

A digital dashboard provides instant access to rich data, advanced footprinting and granular traceability. Highly targeted interventions can then improve economic, social and environmental factors.

Embedded within **AtSource** is our ambitious global goal to have 100% of all product and ingredients '**AtSource** ready' by 2025\*.

\* Excludes exchange traded volumes

# DRIVING CHANGE

There is an inescapable imperative for those working in the agricultural system to overcome the multitude of serious challenges and become the solution to feeding, clothing and sheltering a growing population.

This is why it's time to **Re-imagine Global Agriculture**. This is Olam's company Purpose which we will carry out within our ethos of Growing Responsibly, in collaboration with our customers and other partners.

**AtSource** is core to our success.



**RE-IMAGINING  
GLOBAL  
AGRICULTURE  
TOGETHER**



# ADDRESSING PEOPLE, PLANET AND FARMER LIVELIHOODS

**AtSource** provides unparalleled information across 12 core sustainability topics, grouped into 3 pillars:

## People: promoting safe and fair employment

Focused on people involved throughout the supply chain, metrics look at:

- Farmers and farm labourers, including child, forced or bonded labour
- Equal opportunity for and inclusion of women
- Consumer safety

## Planet: driving optimum use of land and natural resources

Metrics support Climate-Smart Agriculture and the need to stay within our Planetary Boundaries for the future security of supply. We measure and take action on:

- Better agricultural practices including responsible use of agricultural inputs
- Using water efficiently and regenerating ecosystem services
- Land use change and greenhouse gas emissions, ending deforestation in our supply chains

## Farmer Livelihoods: improving economic viability

Addressing the needs of both small and large-scale farmers, metrics cover:

- Productivity
- Finance and profitability
- Availability of essential services, health and education, including food security in developing nations



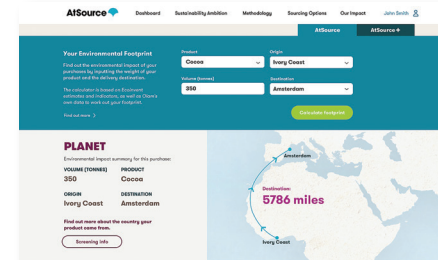
# A HOLISTIC AND TRANSPARENT VIEW

Through **AtSource** we can seamlessly connect customers directly to the source of supply, across the entire journey from field to processing, country of origin to destination market.

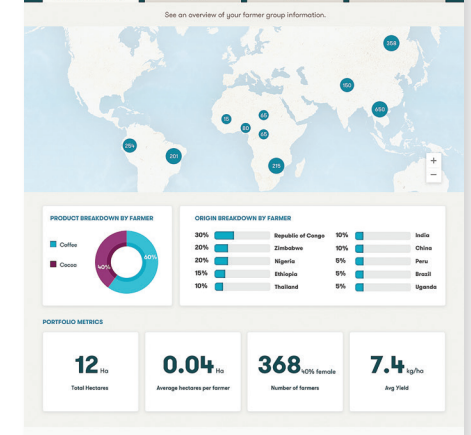
The user-friendly digital dashboard provides comprehensive traceability and detailed data across all 12 topics by farmer groups, tracking against specific commitments made by Olam, or by the customer.

Our unique Eco-Calculator helps customers assess, in an instant, the environmental footprint of their sourcing.

It also enables customers to see at a glance all data, assurances, and verifications necessary to feel that declared sustainability commitments are being met.



Program	Origin	Product
✓ COOPFICA BEN	BANFOREST ALLIANCE	COFFEE
✓ COOPFICA BIA	UTE	COFFEE
✓ COOPFICA BLYE	FARFARDE VEA	COFFEE
✓ GAST	BLYE	OLAM LIVELIHOOD CHALLENGE
✓ BOGAMA BLYE	CERTIFIED COFFEE	COFFEE
✓ BOGAMA BLYE	CERTIFIED COFFEE	COFFEE



# A TIERED APPROACH

Our offer builds across 3 tiers with progressively enhanced levels of impact, verification, insight and information, culminating in transformational change.

## AtSource

### Tier 1 - AtSource Entry Level

- Reassurance that suppliers are engaged on responsible sourcing principles and practices under the Olam Supplier Code.
- Country level social and environmental risk-screening are provided, coupled with our Eco-Calculator.

## AtSource+

### Tier 2 - AtSource Plus

- Focuses on 12 core sustainability topics, with over 80 indicators, starting at farmer group level.
- Granular traceability and advanced environmental footprinting track right from the farm through to logistics, processing and delivery to the customer.
- Programmes are subject to independent verification of all metrics corresponding to the improvement of economic, environmental and social factors.
- The resulting insights offer opportunities for more precise and resource-efficient sustainability programmes.

## AtSource ∞

### Tier 3 - AtSource Infinity

- Our ambition to transform the supply chain by delivering a net positive impact at scale.
- These programmes, co-created with customers and other partners, will significantly regenerate landscapes in which farmers prosper and communities thrive.
- Such programmes will ultimately benefit wider populations and the earth's ecosystems.

# BETTER FOR CUSTOMERS

Consumers worldwide increasingly demand more assurance that what they purchase is safe and sustainable for both people and planet.

**AtSource** is a powerful resource enabling our customers to meet these expectations and more, as they advance on their own sustainability journeys.

And to make life easier, we're providing valuable, consumer-ready stories to share about the farmers and communities we are helping to thrive.

#### **AtSource provides:**

- Supply chain traceability, surety and resilience
- Sustainability assurance
- Valuable data and narratives
- A user-friendly digital tool





# BETTER FOR FARMERS, GROWERS, AND THEIR COMMUNITIES

Farmers across the world from America to Zimbabwe are facing immense challenges.

Through **AtSource**, farmer and grower livelihoods can be improved, together with the wellbeing of their whole communities.

#### **Economic:**

Economic viability is essential and can be improved through farming skills for better yield and quality, business training, premium payments, and 0% interest loans.

#### **Social:**

Investment in social infrastructure such as schools, pharmacies, bore holes and solar lights help develop rural communities where people want to live and work.

#### **Environmental:**

Through **AtSource** we also work with farmers to value and nurture the natural services that sustainable farming depends on – fertile soils,

clean water and healthy natural habitats on and around farms. In turn this dissuades farmers from encroaching into fertile forest lands.

Climate smart practices such as mulching, soil protection, tree planting and water conservation can both reduce the environmental footprint and contribute to better crop yields and quality. The footprint calculator not only tracks the overall impact but gives powerful pointers for improving performance by addressing root causes.

These are just some of the ways in which we are helping to create on-the-ground positive impact for communities, directly and indirectly involved in farming and agri-processing, both country-wide and globally.

**TO FIND OUT MORE VISIT  
[www.AtSource.io](http://www.AtSource.io)**



# IT'S HOW WE ARE RE-IMAGINING GLOBAL AGRICULTURE.

**Olam International Limited**

7 Straits View  
Marina One East  
Tower #20-01  
Singapore 018936

[www.AtSource.io](http://www.AtSource.io)



Printed April 2018